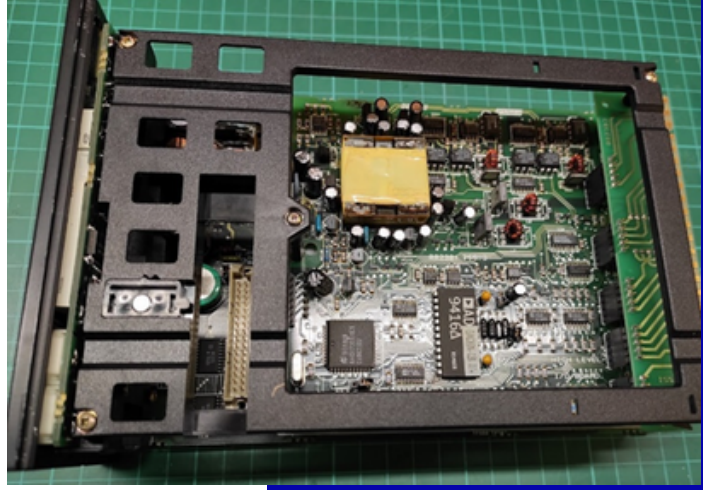


# INSPECTION, TEST & REPAIR



## Failed Fire Pump Flow Controller Repair

### PROBLEM

Our client's flow control valve microprocessor/ controller failed resulting in restricted operation of the asset due to critical fire pump availability. The controller was not functioning at all and no functional spares were available.



A rapid turnaround was critical to allow the client to resume operations and minimise production losses.

### OBJECTIVE

A rapid turnaround was critical to allow the client to resume operations and minimise production losses.

Our engineers would use their knowledge and experience to quickly diagnose, repair and test the controller, to return it to full functionality.

### SOLUTION

The units are obsolete with no equivalent replacements readily available. The client found a second, faulty spare unit in their stock. Metron repaired, refurbished and fully tested this spare unit, increasing the client critical spares holding and capability. This ensured continued reliable operation of the system so that any future failures would have a minimal impact on operations.

This was rapidly air freighted back offshore, from our local facility, situated less than 15 minutes from the airport, to allow the asset to resume full operation.

Metron were able to provide a quick turnaround for the client and returned the fire pump back to operational use in 2 days, reducing downtime and maintaining safety for the platform.

### BENEFITS

- 1 Maintain safety of the platform
- 2 Increase overall reliability
- 3 Reduce downtime and the risk of production losses